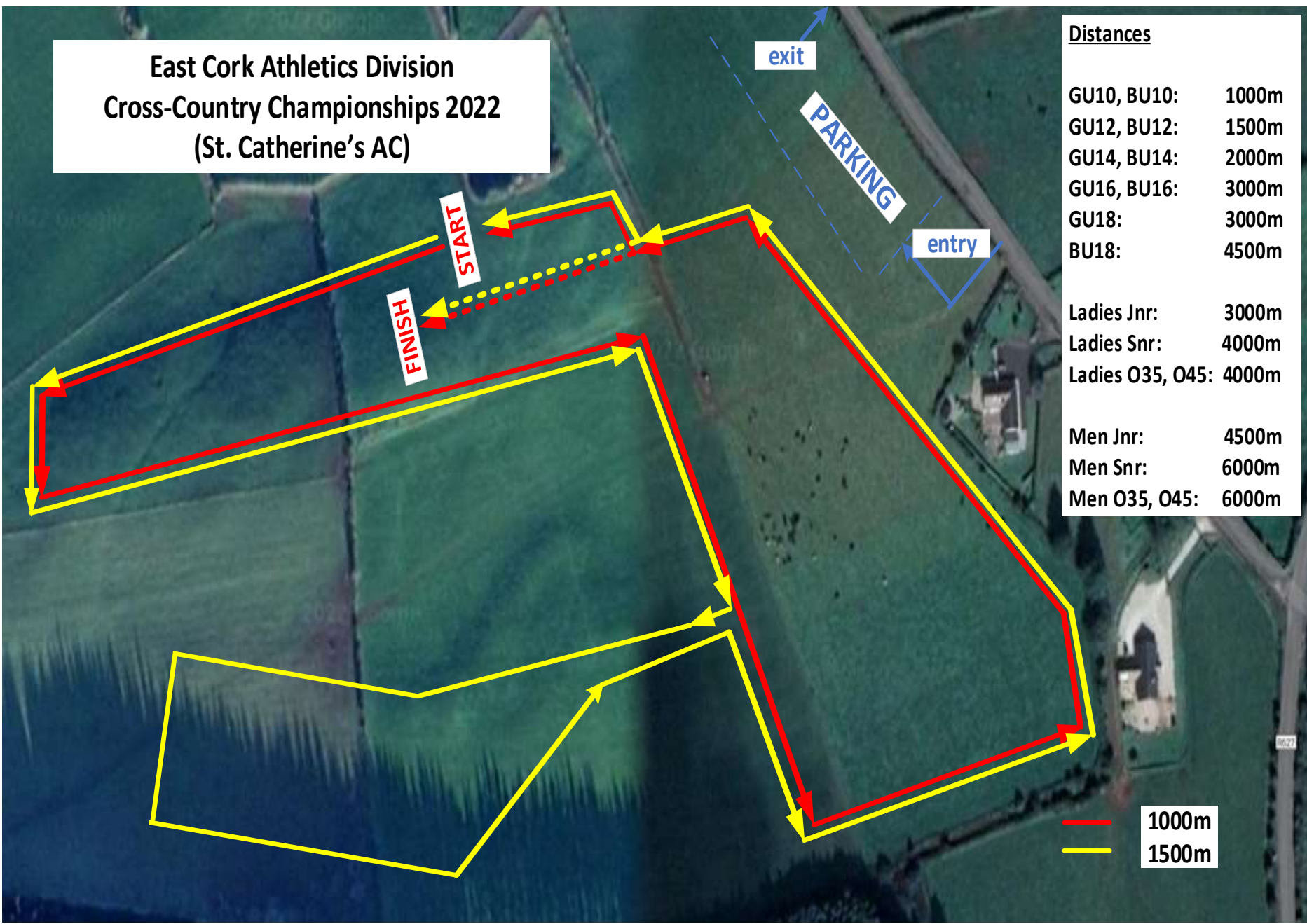


**East Cork Athletics Division
Cross-Country Championships 2022
(St. Catherine's AC)**



Distances

| | |
|------------------|-------|
| GU10, BU10: | 1000m |
| GU12, BU12: | 1500m |
| GU14, BU14: | 2000m |
| GU16, BU16: | 3000m |
| GU18: | 3000m |
| BU18: | 4500m |
| Ladies | |
| Ladies Jnr: | 3000m |
| Ladies Snr: | 4000m |
| Ladies O35, O45: | 4000m |
| Men | |
| Men Jnr: | 4500m |
| Men Snr: | 6000m |
| Men O35, O45: | 6000m |

— 1000m
— 1500m